



Reach™

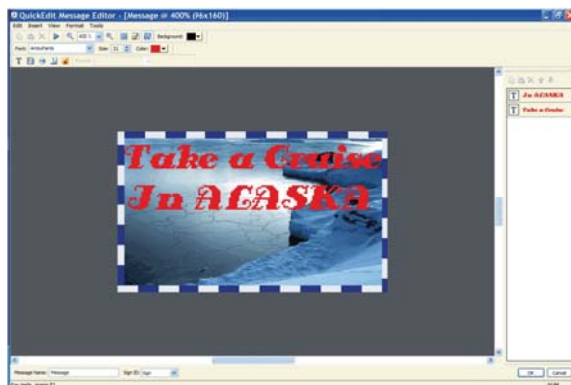
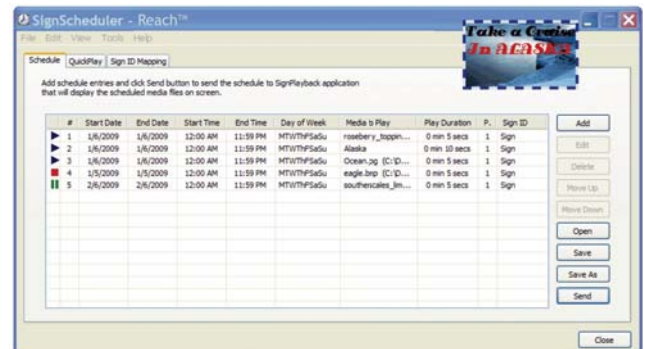
MEDIA SOFTWARE

The power has come to you. Effective advertising is within your reach.

Now, experience the ease of reaching your target audience quickly and effectively with Reach™ Media Software; gain complete control of scheduling your custom third party messages, as well as, quickly creating your own messages within the software to showcase on your dynamic LED Display.

SignScheduler

- Support *.avi, *.wmv, *.mpg, *.swf, *.bmp, *.gif, and *.jpg
- TCP/IP connection
- Preview schedule
- Print schedule
- Save schedule as a comma-delimited text
- Support for multiple signs
- Schedule brightness
- QuickPlay
- Insert date, time, and temperature
- Overlay text on the fly
- Grid lines with snapping feature
- Export a schedule
- Extract frames (images) from a schedule
- Button to QuickEdit



QuickEdit

- 44 enter effects
- 43 exit effects
- Frame inspector
- Effects info dialog box
- Font preview
- Animation preview
- Insert *.bmp, *.gif, and *.jpg files
- Custom colors, text, and re-size media
- Line-by-line effects
- Font styles (Bold, Italic, Underline, and Outline, Strikethrough, Gradient, Shadow, 3D, and text angle)
- Transition effects
- Special background effects (Gradient background, patterns, image background)
- Border effect
- Layout Manager

Optional Features (sold separately)

- LiveVideo
- DVD

System Requirements

Operating Systems

- Microsoft® Windows® 2000, XP, or Vista
- Microsoft DirectX® 8.0 or above
(Downloadable from www.microsoft.com/directx/default.asp)

Minimum Hardware

- Intel® Pentium® III 600 MHz (Recommended: Pentium 4 1.0 GHz or greater)
- 128 MB RAM (Recommended: 512 MB RAM or greater)
- Up to 50 MB hard drive space
(Additional space required for your images/videos/animations/movies)
- 1024 x 768 monitor resolution
- 32-bit video card

exclusively by:

adsLED
INCORPORATED

www.adsled.com